

# DIN 933 - sim. UNI 5739 EN ISO 4017

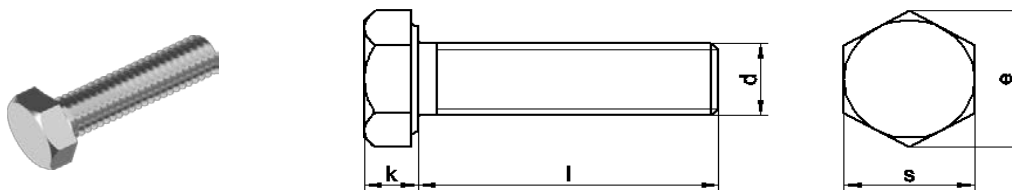
Vite testa esagonale

interamente filettata

Hexagon screw

disponibile in [AISI 304](#) / [AISI 316](#) / [AISI 316 R 80](#)

available in [AISI 304](#) / [AISI 316](#) / [AISI 316 A4-80](#)



d	M2	M2,5	M3	M4	M5
k max.	1,4	1,7	2	2,8	3,5
s	4	5	5,5	7	8
e	4,32	5,45	6,01	7,66	8,79
l	da 3 a 20	da 3 a 20	da 5 a 50	da 5 a 70	da 6 a 80

d	M6	M8	M10	M12	M14
k max.	4	5,3	6,4	7,5	8,8
s	10	13	17	19	22
e	11,05	14,38	18,9	21,1	24,49
l	da 6 a 120	da 8 a 200	da 10 a 200	da 16 a 250	da 20 a 150

d	M16	M18	M20	M22	M24
k max.	10	11,5	12,5	14	15
s	24	27	30	32	36
e	26,75	30,14	33,53	35,72	39,98
l	da 20 a 250	da 25 a 150	da 30 a 250	da 30 a 150	da 30 a 250

d	M27	M30	M33	M36	
k max.	17	18,7	21	22,5	
s	41	46	50	55	
e	45,2	50,85	55,37	60,79	
l	da 50 a 150	da 50 a 150	da 50 a 150	da 50 a 180	

## ISO 4017 - sim. DIN 933

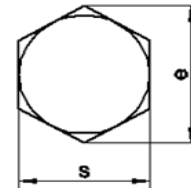
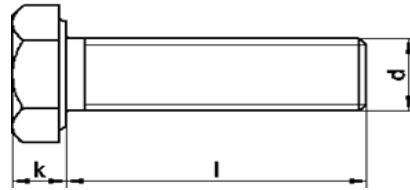
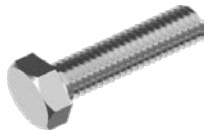
### Vite testa esagonale

interamente filettata

### Hexagon screw

disponibile in [AISI 304](#) / [AISI 316](#)

available in [AISI 304](#) / [AISI 316](#)



d	M10	M12
k	6,4	7,5
s	16	18
e	17,77	20,03
l	da 16 a 100	da 16 a 100

## DIN 933 - sim. ISO 4017

### Viti testa esagonale

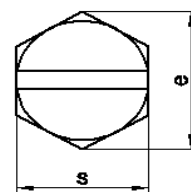
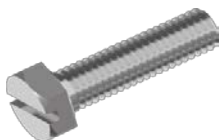
interamente filettate, con intaglio

### Hexagon head screws

full thread, with slot

disponibile in [AISI 304](#) / [AISI 316](#)

available in [AISI 304](#) / [AISI 316](#)



d	M4	M5	M6	M8
k max.	2,8	3,5	4	5,3
s	7	8	10	13
e	7,66	8,79	11,05	14,38
n	1	1,2	1,6	2
t	1,1	1,4	1,6	10,5
l	da 6 A 16	da 6 a 40	da 8 a 40	da 10 a 40